

## Hip-High Chair

HCPCS:

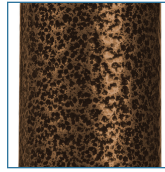


FIGURE A



- Designed for post-hip surgery residents
- Attractive, durable brown-vein finish is easy-to-maintain and less institutional looking (Figure A)
- Contoured armrests are comfortable and durable
- Attractive vinyl seat and backrest are soft, washable, comfortable and water resistant

### PRODUCTS

#### Description

17100-BV	Hip Chair, Brown Vein, 1/cs
----------	-----------------------------

### SPECIFICATIONS

#### Description

Warranty	1 Year on Upholstery, Limited Lifetime Warranty on Frame
Weight Capacity	300 lbs
Carton Shipping Weight	47 lbs.
Floor to Footrest Height (adjustable)	6"
Weight	37 lbs.
Width Between Arms	17.5"